

Riverview Preserve

Turn onto Riverview Drive in Hanover to find a winding road that ends on a bluff overlooking the Ohio River. The drive is bordered by family homes and steep, wooded hillsides that head down into valleys.

When a 3.5 acre portion of that steep forest came up for auction, something impressive happened: the neighbors joined forces to protect the woods.

At the time of the November 2016 auction, there were rumors about potential development of the forest.

The neighbors realized that they all enjoyed those woods along the road as a place to walk and enjoy nature.

Only days before the auction, Bill McCubbin, a Riverview Drive resident, and a few other neighbors acted quickly. They handed out invitations, door to door, at lunchtime, for a 4pm gathering that same day.

Everyone living along Riverview Drive was invited to be part of a conversation about how to protect the forest.

Many individuals came to that initial meeting and pledged funds to support the purchase of the property that weekend. McCubbin represented the neighbors at the auction and successfully bid for the property.

The neighbors thought carefully about the long term future of the land, and decided to partner with Oak Heritage Conservancy.

The parcel on Riverview Drive is smaller than most of the natural areas that Oak Heritage Conservancy protects, but there was a clear ecological benefit to protecting the land.

The parcel – now called Riverview Preserve – connects to the large swaths of forest at Clifty Falls State Park. Wildlife need contiguous habitat so

that they can forage, breed, and seek shelter. This connection made Riverview Preserve a priority for the Conservancy.

Riverview Preserve tells an important story—that nature matters to people in southeast Indiana, and that people can come together to care for the natural world.

We are so impressed with the neighbors of Riverview Drive. We're grateful that they took action to protect the natural heritage of southeast Indiana. We're honored to care for Riverview Preserve for the public good, forever.



OAK HERITAGE
CONSERVANCY

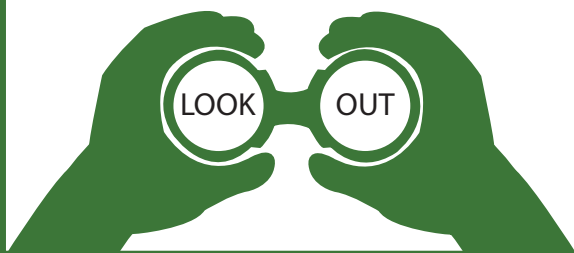
Consider the Ohio River from a new (old?) perspective.

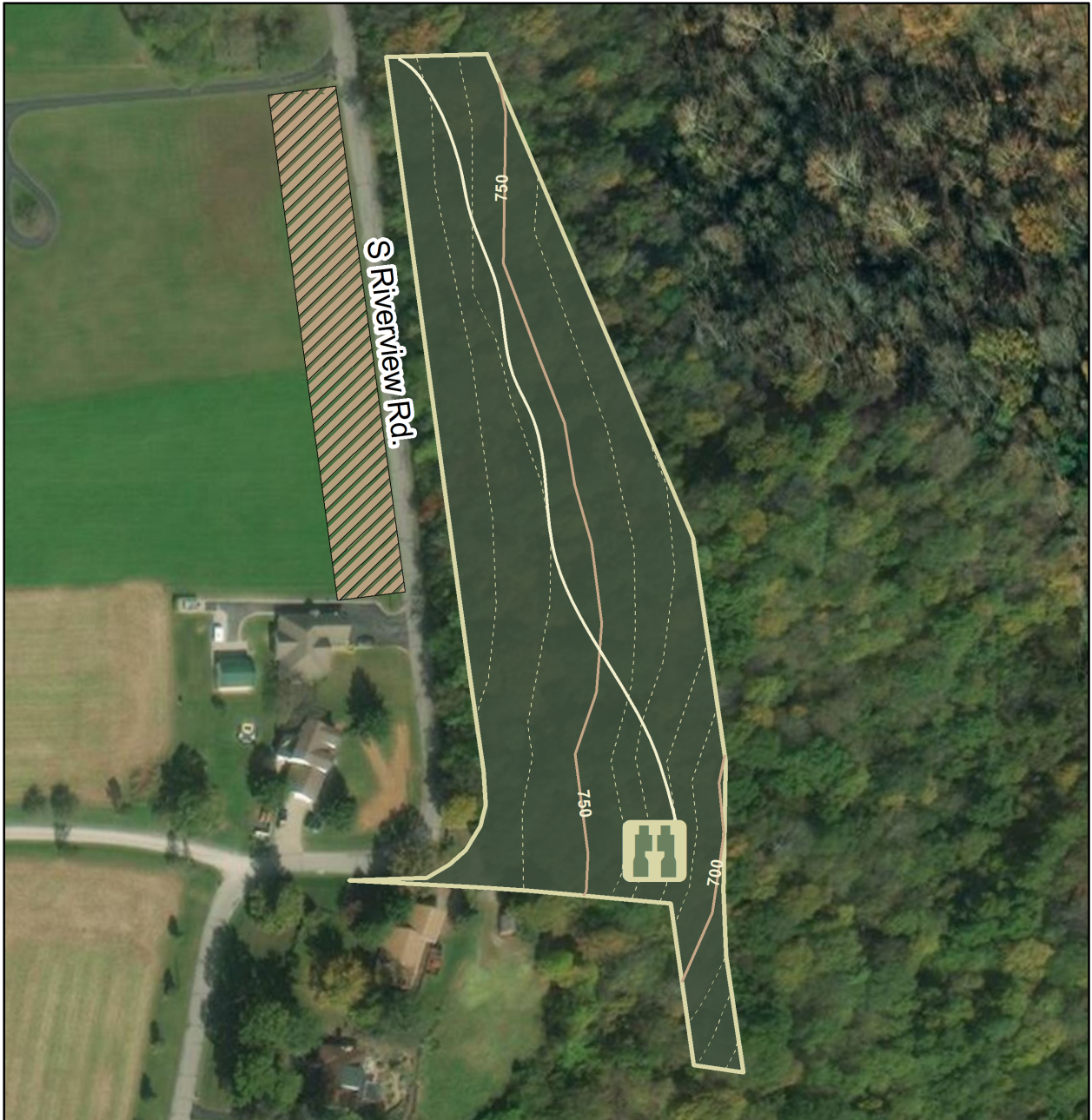
The many glaciers that have shaped this land can still be felt today. Take a walk at Riverview Preserve, and consider that the Ohio River was formed about 100,000 years ago by retreating glaciers. As recently as 10,000 years ago, this land was under a mile of ice.

Look back in time.

As you glimpse the Ohio River through the forest at Riverview, it's easy to imagine this forest and river valley in the time before European settlers. The Iroquois called the river, "the beautiful one, Ohio." The Shawnee, who lived along this section of the Ohio, hunted, fished, and lived in these woods and forests. When European explorers arrived, they documented vast herds of elk, deer, birds, and buffalo.

In more recent history, "Hill Farms" dotted this landscape. In the 1800's, families farmed on these hillsides and any flat land that they could find. These farms were connected by wagon trails





Points of Interest



Educational Sign



Observation



Parking



Trailhead

Streams

Trails

Minor Contours

Major Contours

Property Lines Light

Habitat Type

Access

Hay Field

Immature Forest

Mature Forest

No Access

Old Growth Forest

Open/Meadow Area

Open Water

Pollinator Habitat

Restoration Area-Forest

Restoration Area-Pollinator

Native Wildflowers

0 0.0125 0.025 0.05 Miles

