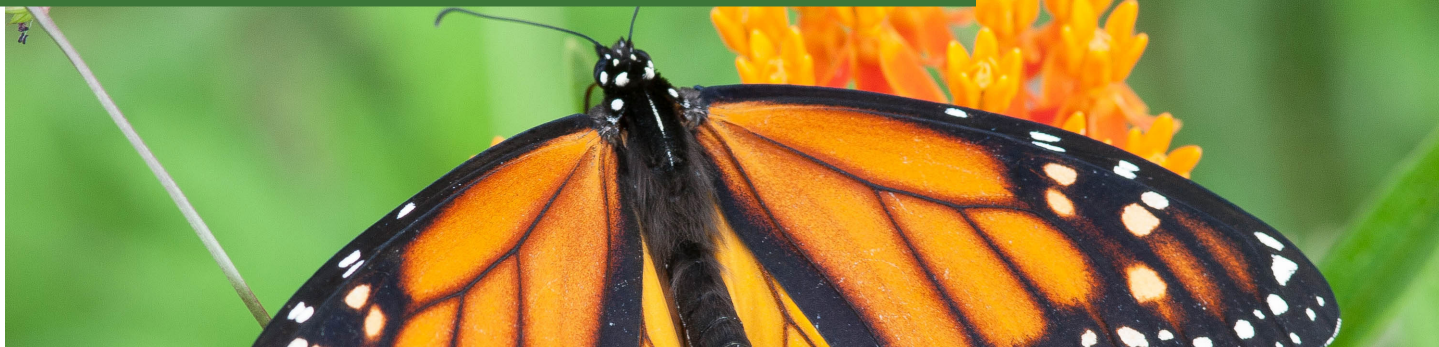


Monarch Meadows Nature Preserve



The Case for Conservation

Chrys Cook, an Oak Heritage Board Member, had been watching this property for two years before we purchased it. She knew this place was special: it was home to more Monarch butterflies than anywhere else she'd visited in southern Indiana. Monarch populations have been plummeting for years, so finding a place where they thrive is unique.

When she learned that the property was up for auction and, likely, development, she realized that Oak Heritage might be ready to help.

After careful consideration, visits to the land, and lengthy conversation, we decided to try to raise the funds needed and purchase the property. This was unusual, as we normally create preserves when landowners donate land for future generations to enjoy.

But this place was unique: we knew from Chrys's visits that Monarchs regularly visited the property and that it offered just what the Monarchs need.

Monarch butterflies migrate through the Midwest annually. They need a few

specific things to survive the journey.

First, they need native flowering plants like Butterfly Weed that provide nectar for them to eat. This food source is critical to their long migration.

Second, they only lay their eggs on milkweed plants.

The migration includes multiple generations, so they have to have places in Indiana and throughout their flight path to raise a new generation of butterflies.

The property on Dibble Road hosts an ideal combination both large patches of Butterfly Weed, a source of food for the adults, and milkweed, where Monarchs can lay eggs and caterpillars can thrive.

Unfortunately, we only had three weeks before the auction. We calculated that we needed approximately \$250,000 to purchase the property. Longtime supporters Josie and Geoff Fox offered up a generous idea: their foundation could match every contribution 4:1, up to \$50,000. If we could secure \$50,000, we could go to the auction prepared to purchase the land.

Outpouring of Support Protects Monarch Butterfly Habitat

Donations streamed in from across the country. Most, though, came from here in southeast Indiana. Over 100 families, individuals, organizations, businesses and foundations contributed. Donations ranged from a few dollars to thousands of dollars. We reached the \$250,000 mark on the day before the auction.

"We protected the core habitat that we were aiming for the – the place where Butterfly Weed and Milkweed grow in vast swaths – as well as adjacent land that will help buffer and protect the core Monarch habitat."

Today, we are working to restore additional habitat for pollinators, so that monarchs and others can thrive.

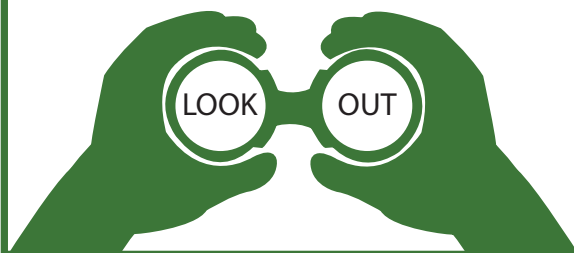


OAK HERITAGE

CONSERVANCY

Look for Native Pollinators.

Walk the grassy trails through pollinator habitat. Look for native pollinators, like monarchs and other butterflies, native bees, birds, and moths. Keep a close eye out for monarchs: you might see tiny monarch caterpillars crawling on the underside of milkweed leaves, large caterpillars munching away, or brand new butterflies coming out of their chrysalis. (As you explore, please be respectful of the wildflowers and wildlife.)



Join Us for a Butterfly Walk.

If you want to be part of a community, join us for a butterfly walk. You can learn about butterflies with new friends.

Upcoming events are listed on the Oak Heritage Conservancy website, at www.oakheritageconservancy.org.



Points of Interest



Educational Sign



Observation



Parking



Trailhead

Streams

Trails

Property Lines Light

Access

Hay Field

Immature Forest

Mature Forest

No Access

Old Growth Forest

Open/Meadow Area

Open Water

Pollinator Habitat

Restoration Area-Forest

Restoration Area-Pollinator

Native Wildflowers

0 0.0425 0.085 0.17 Miles

